

## PRESSURE REDUCING VALVE DIRECT ACTING PRV25

### DESCRIPTION

The ADCA PRV25 series of direct acting pressure reducing valves, are designed for use on steam, compressed air, water and other gases and liquids.

They are suitable for reducing steam pressure at the point of use on laundry machines, dyeing, food industries, sterilizers, etc.

### MAIN FEATURES

- Compact design.
- Bellows specially designed for high durability.
- Non-rising adjustment knob.
- Lockable knob system.
- Built-in strainer.

- OPTIONS:**
- Rising adjustment knob with lock nut.
  - Top cap (adjustment screw with cover).
  - Spring and dome load version.
  - Gauge connection on body.

- USE:**
- Saturated steam, compressed air, water and other gases and liquids compatible with the construction.

- AVAILABLE MODELS:**
- PRV25/2S – carbon steel construction, metal to metal sealing.
  - PRV25/2SG – carbon steel construction, soft sealing.
  - PRW25/2S – carbon steel construction, balanced soft sealing.
  - PRV25I – stainless steel construction, metal to metal sealing.
  - PRV25IG – stainless steel construction, soft sealing.
  - PRW25I – stainless steel construction, balanced soft sealing.

- SIZES:** 1/2" to 1"; DN 15 to DN 25.

- CONNECTIONS:**
- Female threaded ISO 7 Rp or NPT.
  - Flanged EN 1092-1 PN 25.
  - Flanged ASME B16.5 Class 150 or 300.

- INSTALLATION:**
- Horizontal installation.
  - A "Y" strainer should be installed upstream of the valve.
  - See IMI – Installation and maintenance instructions.



**CE MARKING – GROUP 2 (PED – European Directive)**

PN 25	Category
DN 15 to 25	SEP

**LIMITING CONDITIONS**

Valve model	PRV25/2S PRV25I	PRV25/2SG PRV25IG	PRW25/2S PRW25I
Body design conditions	PN 25	PN 25	PN 25
Maximum upstream pressure	17 bar	17 bar	14 bar
Maximum downstream pressure	8,6 bar	8,6 bar	8,6 bar
Minimum downstream pressure	0,14 bar	0,14 bar	0,35 bar
Maximum design temperature	210 °C	180 °C	75 °C
Maximum recommended reducing ratio	10:1	10:1	10:1
Maximum dome loading pressure	8,6 bar	8,6 bar	8,6 bar

**FLOW RATE COEFFICIENTS (m³/h)**

SIZE	1/2" – DN 15	3/4" – DN 20	1" – DN 25
Kvs	1,7	2,6	3,1

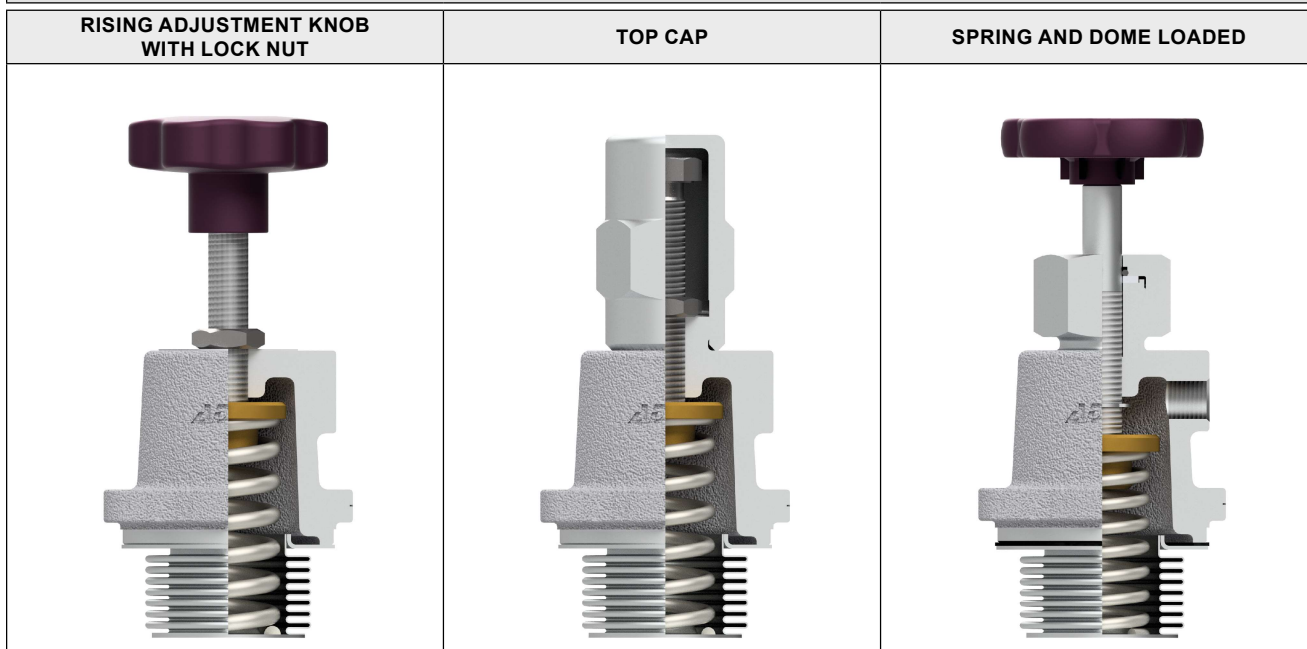
**REGULATING RANGES**

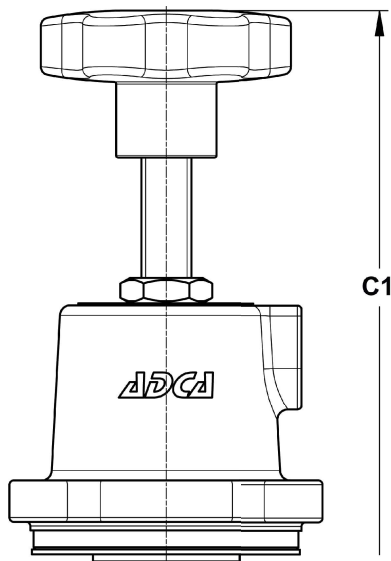
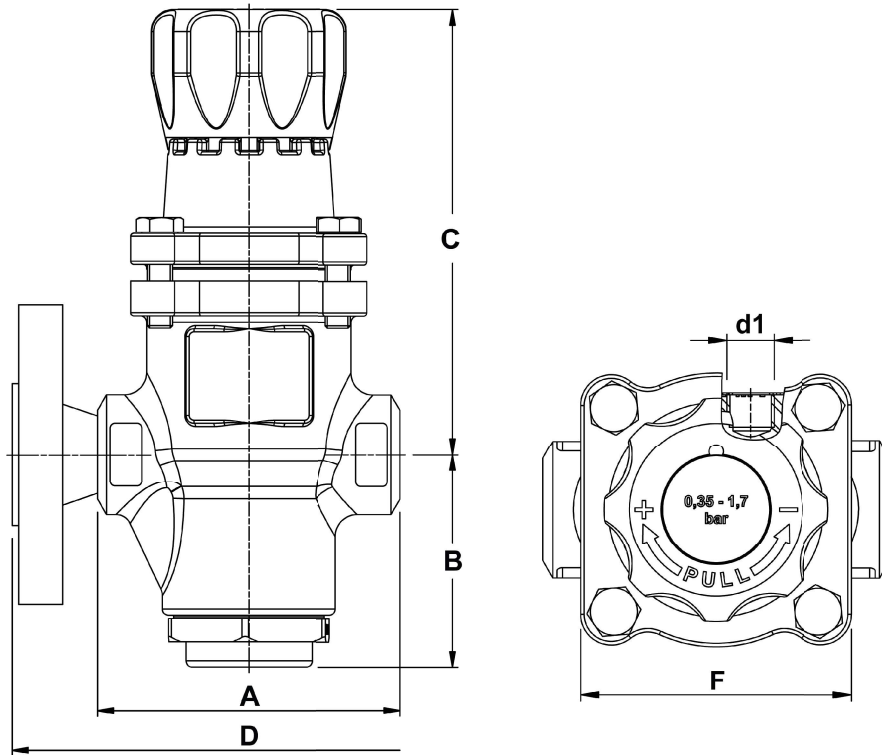
SPRING COLOUR	BLUE *	YELLOW **	GREEN	RED
Spring loaded	0,35 – 1,7 bar	0,14 – 1,7 bar	1,4 – 4,0 bar	3,5 – 8,6 bar
Spring and dome loaded ***	0,35 – 1,7 bar	0,14 – 1,7 bar	1,4 – 4,0 bar	–

\* Only applicable on the PRW models; \*\* Only applicable on the PRV models.

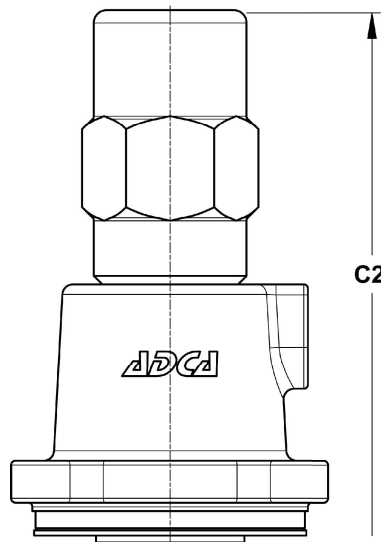
\*\*\* Ranges shown are related to adjustment spring loading forces. Total downstream pressure will correspond to the sum of the pressure resulting from the adjusted spring force and the loading pressure provided by the dome.

**PRV25 OPTIONAL COVERS**

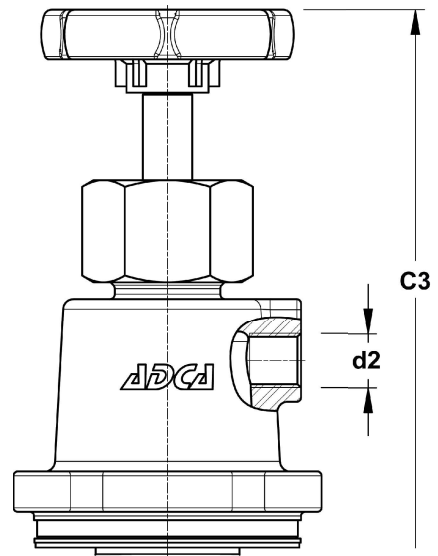




Rising adjustment knob (optional)



Top cap (optional)



Spring and dome loaded (optional)

DIMENSIONS (mm)																
SIZE	THREADED									PN 25		CLASS 150		CLASS 300		
	A	B	C	C1	C2	C3	d1 *	d2 **	F	WGT. (kg)	D	WGT. (kg)	D	WGT. (kg)	D	WGT. (kg)
1/2" – DN 15	96	68,5	141	242	237	243	1/4"	1/4"	74	3	150	4,4	150	4	150	4,4
3/4" – DN 20	96	68,5	141	242	237	243	1/4"	1/4"	74	3	150	5	150	4,4	150	5,3
1" – DN 25	96	68,5	141	242	237	243	1/4"	1/4"	74	2,9	160	5,5	160	5,1	160	5,9

\* Optional gauge connection; \*\* Loading gas dome connection.

Remarks: As standard, in versions manufactured with EN 1092-1 PN 16 flanges or ISO Rp threads, connections d1 and d2 are female threaded ISO 7 Rp. In versions with ASME B16.5 flanges or NPT threads, these connections are female threaded NPT.